

Cleverciti CCP-TR Series High Precision Smart Lamppost Parking Sensor

Technology and Features:

- 📶 Up to 100 spaces per single sensor
- 📶 Wide range coverage, 2 x 128 degrees
- 📶 Detection of any area, marked and unmarked spaces
- 📶 High performance edge computing, low data output/reduced bandwidth
- 📶 Artificial intelligence detection algorithms with over 30 million knowledge vectors on board
- 📶 Deep learning, highest detection performance in all weather conditions
- 📶 Autonomous device monitoring for uninterrupted operation
- 📶 Perfect night vision
- 📶 Stabilizing system for compensation of pole shake and vibration
- 📶 On board connectivity options via LAN, WIFI, LTE, 900MHz, and others such as NB light management systems



Technical Specifications:

General

Detection Rate:	3-5 seconds
Horizontal angle of view:	180°
Connectivity:	WIFI, LTE or LAN
Ingress Protection Rating:	IP65

Power Specifications

AC Input Voltage (external power supply):	90-305 VAC
AC Input Frequency (external power supply):	50/60Hz
AC Input Current Range AC:	0.8A
Power Supply (Maximum):	21W
DC Input Voltage:	12V
DC Input Current:	5A
Power over Ethernet:	N.A.

Operating Conditions

Minimum Temperature:	-4°F / -20°C
Maximum Temperature:	176°F / 80°C
Extended Temperature Range:	On demand
Relative Humidity:	15-85% RH

Non-Operating Conditions

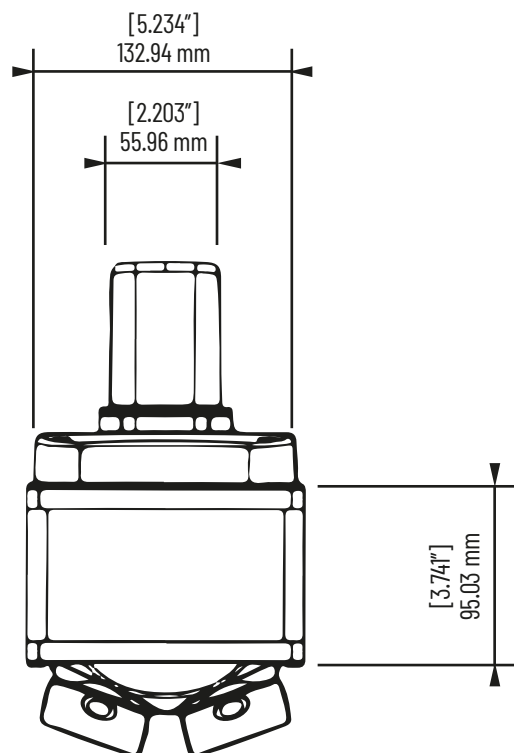
Temperature:	-22°F / -30°C to 176°F / 80°C
Relative Humidity:	15%-85%

Physical Specifications

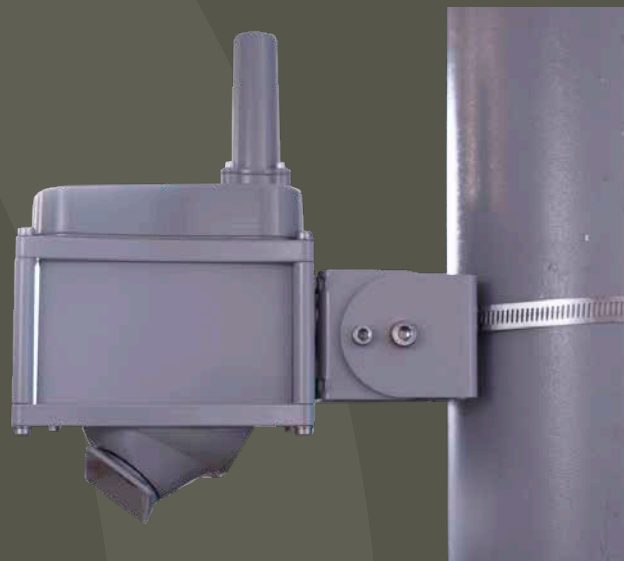
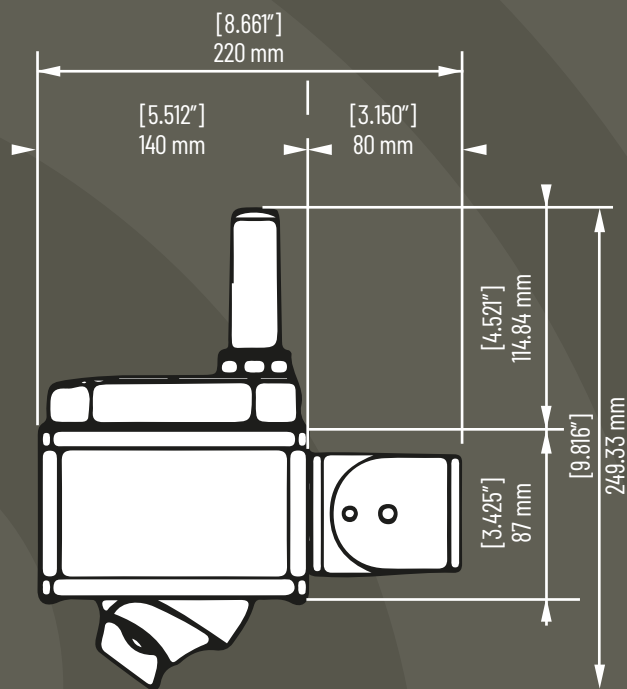
Dimensions (H x W x D):	10in / 25cm x 6in / 15cm x 6in / 15cm
Flex-Mount (refer to installation guide for approved orientation):	0.66lb / 0.3kg
Weight without AC Power Supply (mounting weight):	4.8lb / 2.2kg
Typical Total Weight with AC Power Supply (5m cables):	6.4lb / 2.9kg
Housing: Outdoor	
Housing Material:	Aluminum and Makrolon® 6487
Color (housing):	Anthracite grey, Window grey or white (other colors on demand)
Type of mounting:	Wall mount, Lamp Post Mount

Dimensions and Pictures:

Front view



Side view



Cleverciti Systems GmbH Global Headquarters

Munich Office
Hofmannstrasse 54
81379 Munich, Germany
Tel: +49 89 78576736-23

Cleverciti Systems Corp. North American Offices

Atlanta Office
8000 Avalon Blvd. Suite 100
Alpharetta, Ga. 30009
Tel: (331) 218-7323

Chicago Office
3400 W. Stonegate Blvd., Suite 101-0072
Arlington Heights, Ill. 60005